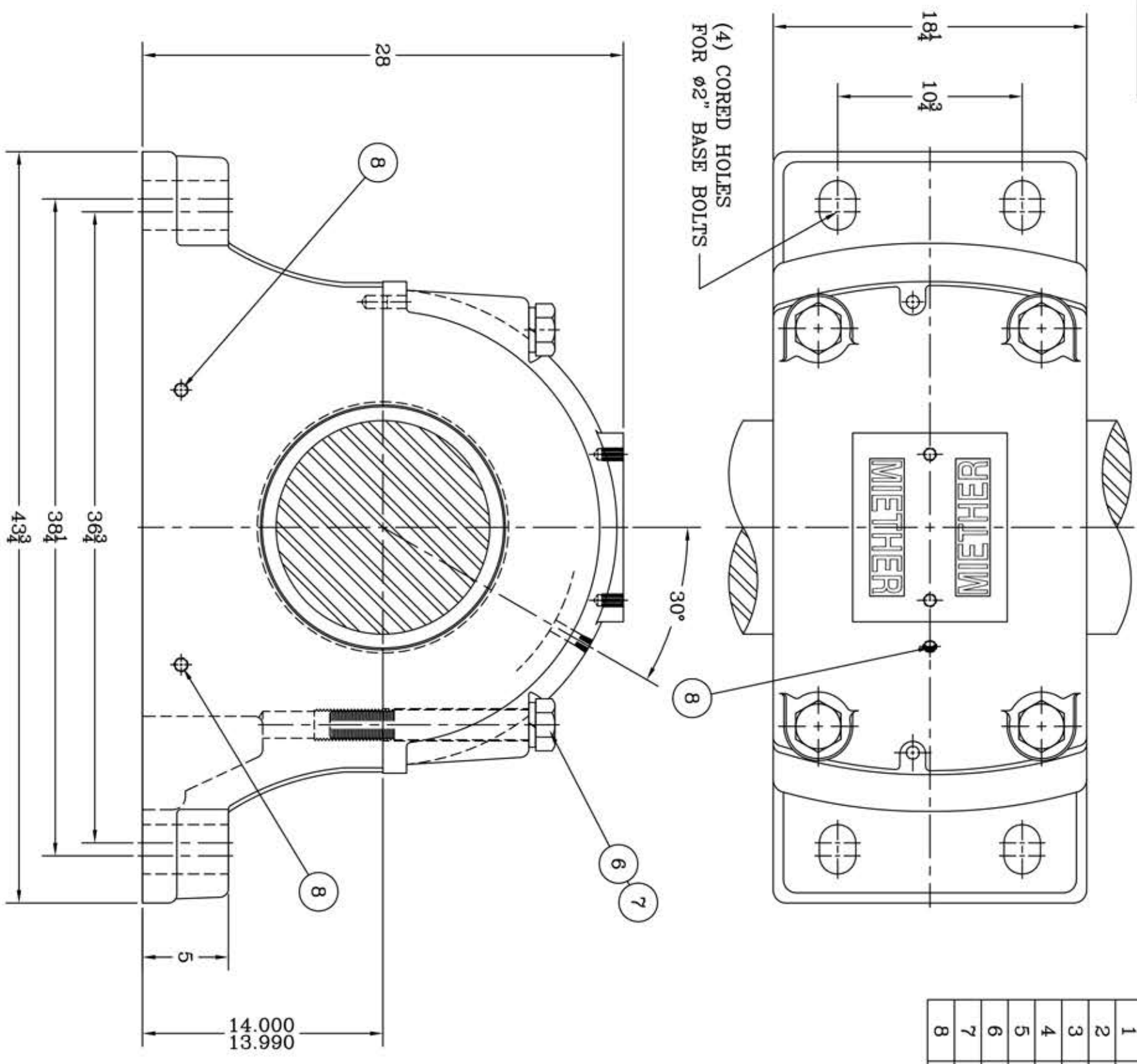
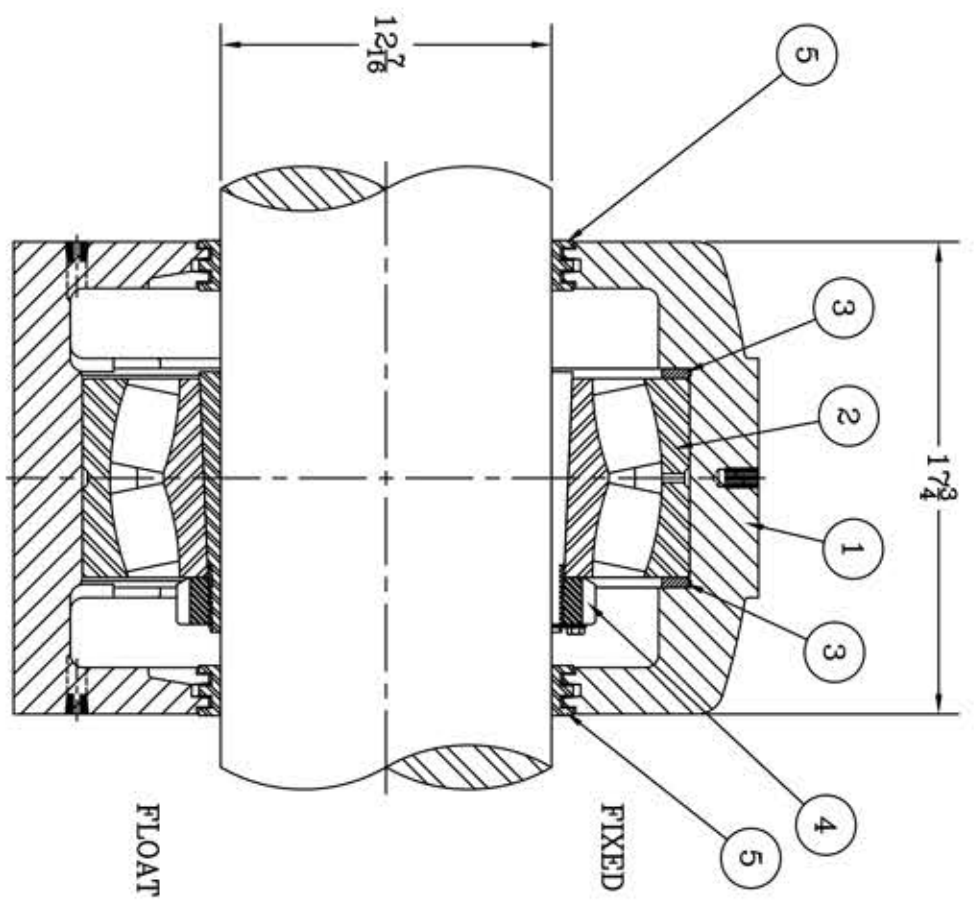


This drawing is the sole property of Miether Bearing Products and contains confidential and proprietary information. It is being provided to you for your use and may not be disclosed to any third party or used for any other purpose without Miether's prior written consent. The [materials] must be returned to the Company upon its demand. Your acceptance of these materials constitutes your acceptance of the foregoing terms.

C-35300



| ITEM | DESCRIPTION | DETAIL | REQUIRED |
|------|------------------------------|-----------------------|----------|
| 1 | HOUSING SDAFD 3168 K 12-07C- | | 1 1 |
| 2 | SPHERICAL ROLLER BEARING | 23168 K/W33 | 1 1 |
| 3 | STABILIZING RING | A-8977 | 2 0 |
| 4 | ADAPTER | SNP 3168 12-07 | 1 1 |
| 5 | TRIPLE SEAL RING | ER-975 | 2 2 |
| 6 | CAP BOLT HEX. HEAD GR.5 | A-29246 | 4 4 |
| 7 | LOCKWASHER | 1 1/2-5 NC x 12" LONG | 4 4 |
| 8 | PIPE PLUG | 1 1/2 SPLIT MED. | 4 4 |
| | | 2-14 NPT | 5 5 |



HOUSING MATERIAL - DUCTILE IRON
ASTM A536 GR 65-45-12

REVISIONS

| SYMBOL | DESCRIPTION |
|--------|-------------|
| C | ... |
| D | ... |
| E | ... |
| F | ... |
| G | ... |
| J | ... |
| K | ... |

TOLERANCE: UNLESS OTHERWISE SPECIFIED
 FRACTIONS +- 1/32" ANGLES +- 0° 30'
 DECIMALS +- .005" WELD +- 1/16"
 CASTING +- 1/16"

A.I.S.I. STANDARD FINISHES
 MICRO-INCH VALUE: 16 32 63 125 250 500 1000

AN ALCO INDUSTRIES COMPANY
 BEARING PRODUCTS
 ODESSA, TX. USA

SDAFD 23168 K 12-07
 ASSEMBLY DRAWING
 SCALE 1 = 5
 DRAWN PCF
 DATE 1/9/13
 CHK:

ASSEMBLY NO.
 DRAWING NO.
 C-35300