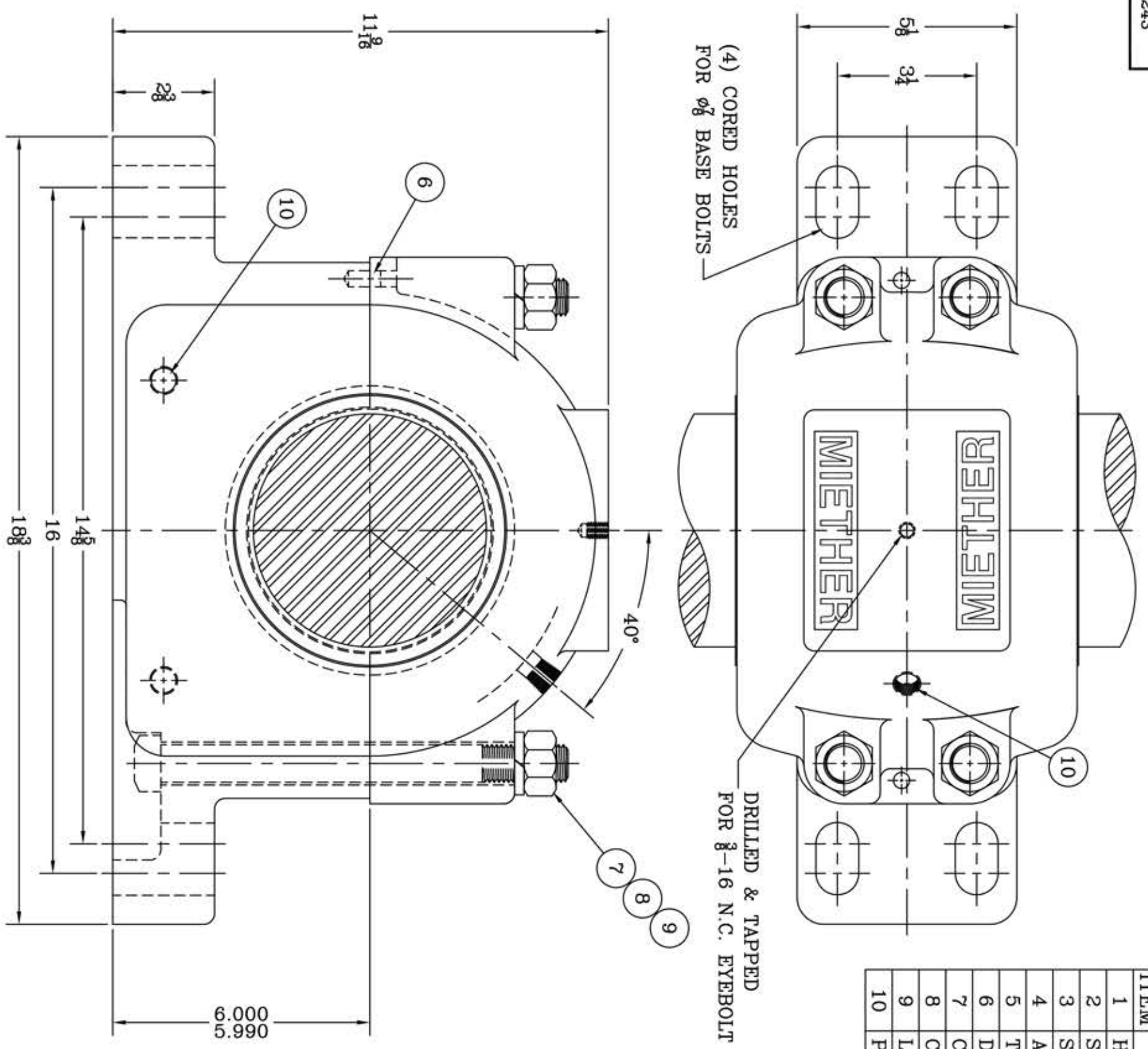
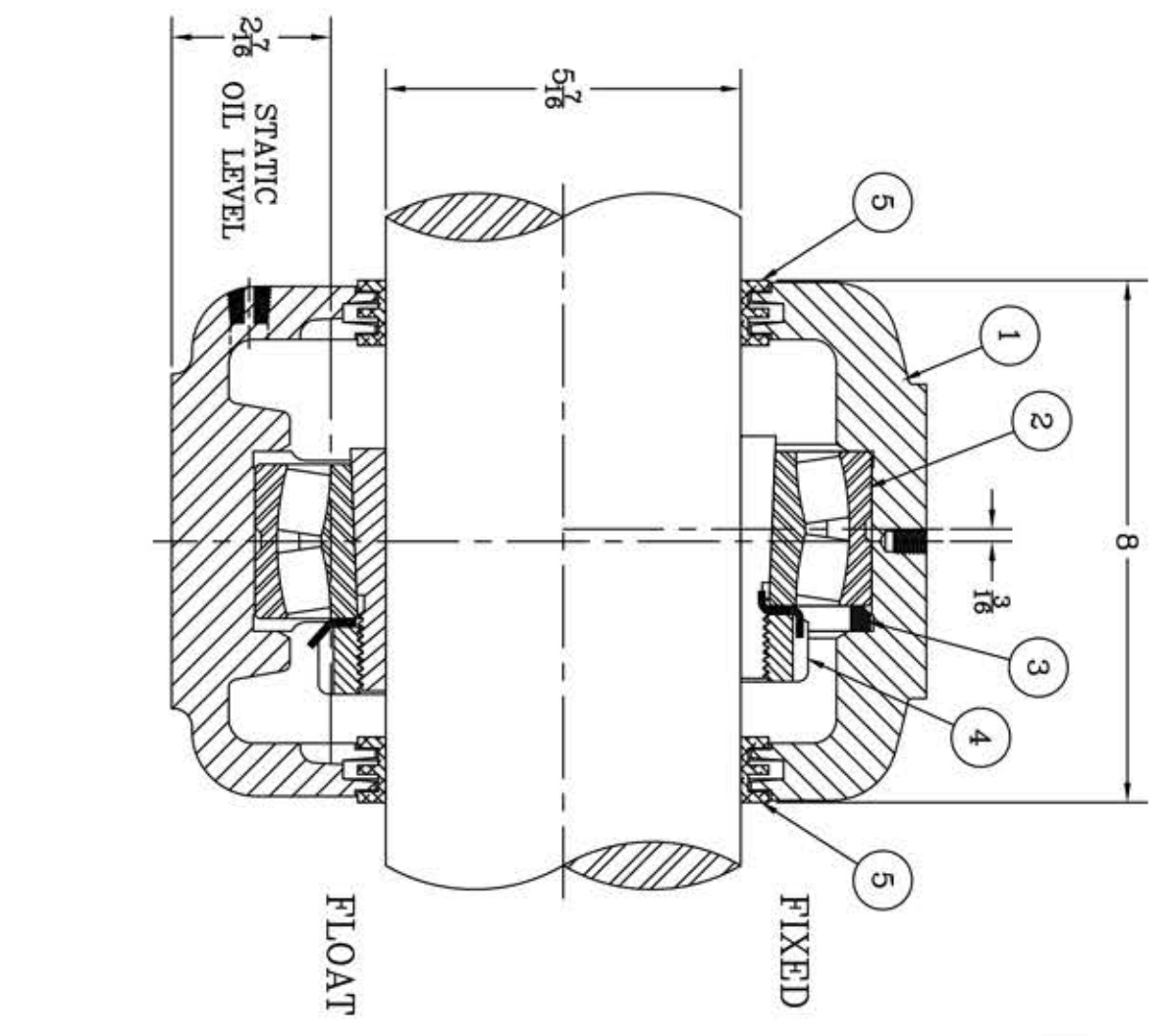


This drawing is the sole property of Miether Bearing Products and contains confidential and proprietary information. It is being provided to you for your use and may not be disclosed to any third party or used for any other purpose without Miether's prior written consent. The [materials] must be returned to the Company upon its demand. Your acceptance of these materials constitutes your acceptance of the foregoing terms.

C-35243



| ITEM | DESCRIPTION               | DETAIL              | REQUIRED |
|------|---------------------------|---------------------|----------|
| 1    | HOUSING SAFD-032 05-07    | C-                  | 1 1      |
| 2    | SPHERICAL ROLLER BEARING  | 23032K/W-33         | 1 1      |
| 3    | STABILIZING RING SR-0-22  | A-12382             | 1 0      |
| 4    | ADAPTER SNW-3032 05-07    | 24489               | 1 1      |
| 5    | TRIPLE SEAL RING LER-130  | A-10582             | 2 2      |
| 6    | DOWEL                     | Ø8 x 3/4 LONG       | 2 2      |
| 7    | CAP BOLT SQUARE HEAD GR.5 | 7-9 NC x 9 1/2 LONG | 4 4      |
| 8    | CAP BOLT HEX. NUT         | 7-9 NC              | 4 4      |
| 9    | LOCKWASHER                | 7 SPLIT MED.        | 4 4      |
| 10   | PIPE PLUG                 | 3/8-18 NPT          | 3 3      |



REVISIONS

| SYMBOL | DESCRIPTION |
|--------|-------------|
| C      | 16          |
| D      | 32          |
| E      | 63          |
| F      | 125         |
| G      | 250         |
| J      | 500         |
| K      | 1000        |

TOLERANCE: UNLESS OTHERWISE SPECIFIED

FRACTIONS  $\pm 1/32"$  ANGLES  $\pm 0^\circ 30'$

DECIMALS  $\pm .005"$  WELD  $\pm 1/16"$

CASTING  $\pm 1/16"$

A.S.I. STANDARD FINISHES

AN ALCO INDUSTRIES COMPANY  
BEARING PRODUCTS  
ODESSA, TX. USA

SAFD 23032 K 05-07  
ASSEMBLY DRAWING

SCALE HALF  
DRAWN PCF  
DATE 1/4/13  
CHK:

ASSEMBLY NO.  
DRAWING NO.  
C-35243