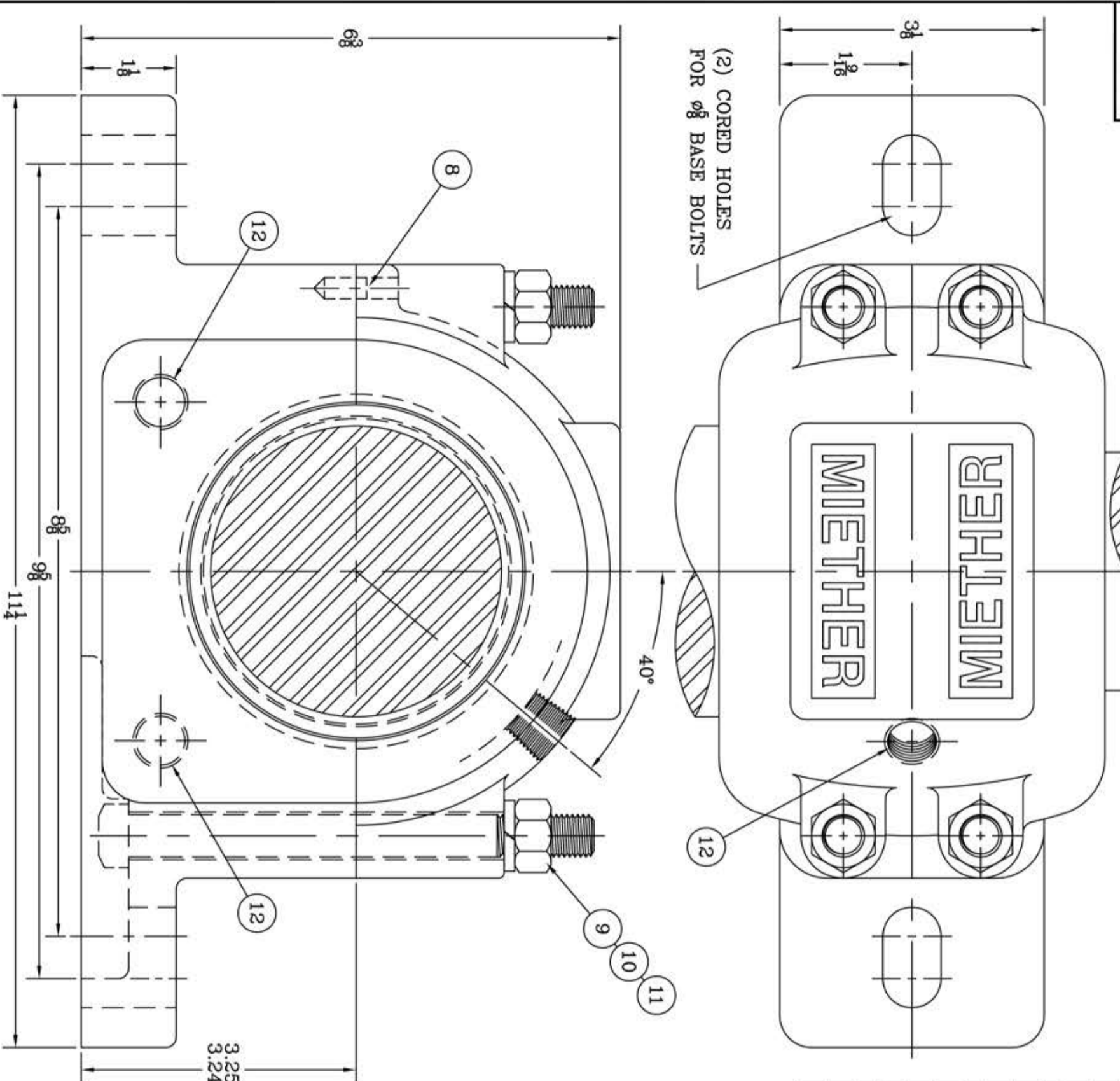
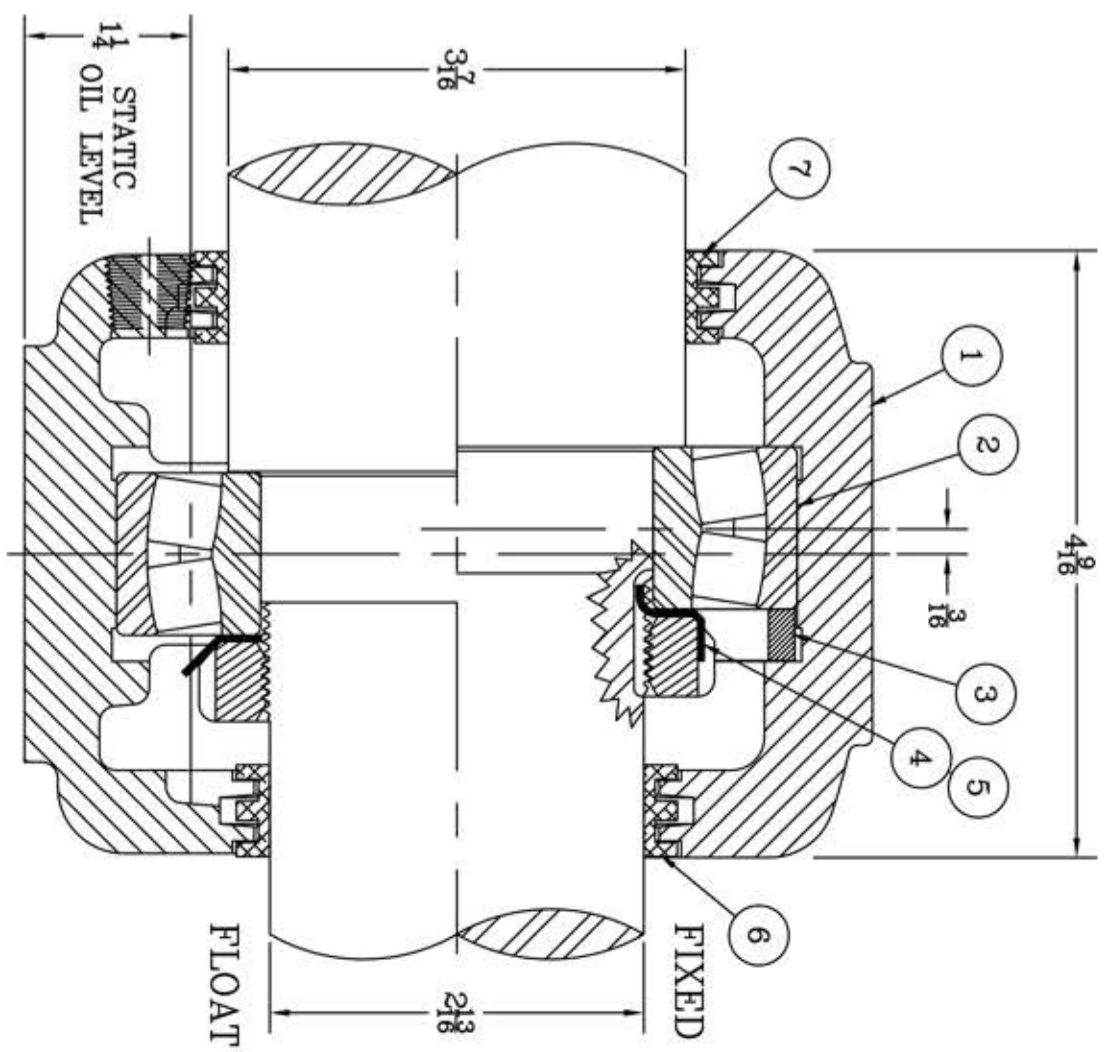


This drawing is the sole property of Miether Bearing Products and contains confidential and proprietary information. It is being provided to you for your use and may not be disclosed to any third party or used for any other purpose without Miether's prior written consent. The [materials] must be returned to the Company upon its demand. Your acceptance of these materials constitutes your acceptance of the foregoing terms.

C-35117

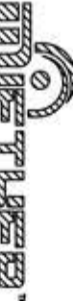


ITEM	DESCRIPTION	DETAIL	REQUIRED
1	HOUSING SAFD 215	C-	1 1
2	SPHERICAL ROLLER BEARING	22215/W33	1 1
3	STABILIZING RING SR-15-12	A-10598	1 0
4	LOCKNUT AN-15	B-11937	1 1
5	LOCKWASHER W-15	00240	1 1
6	TRIPLE SEAL RING LER-46	A-11060	1 1
7	TRIPLE SEAL RING LER-79	A-11074	1 1
8	DOWEL	Ø 1/4 x 3/8 LONG	2 2
9	CAP BOLT SQUARE HEAD Gr 5	1/2-13 NC x 5 1/2 LONG	4 4
10	CAP BOLT HEX. NUT	1/2-13 NC	4 4
11	LOCKWASHER	1/2 SPLIT MED.	4 4
12	PIPE PLUG	3/8-18 NPT	3 3



REVISIONS

SYMBOL	MICRO-INCH VALUE	DESCRIPTION
✓	16	
∇	32	
∇	63	
∇	125	
∇	250	
∇	500	
∇	1000	



 AN ALCO INDUSTRIES COMPANY

ODESSA, TX. USA

SAFD 22215 03-07 x 02-13
 ASSEMBLY DRAWING

SCALE FULL
 DRAWN PCF
 DATE 11/9/12
 CHK:

ASSEMBLY NO.
 DRAWING NO. C-35117

TOLERANCE: UNLESS OTHERWISE SPECIFIED
 FRACTIONS $\pm 1/32$ " ANGLES $\pm 0^\circ 30'$
 DECIMALS $\pm .005$ WELD $\pm 1/16$ "
 CASTING $\pm 1/16$ "

A.I.S.I. STANDARD FINISHES