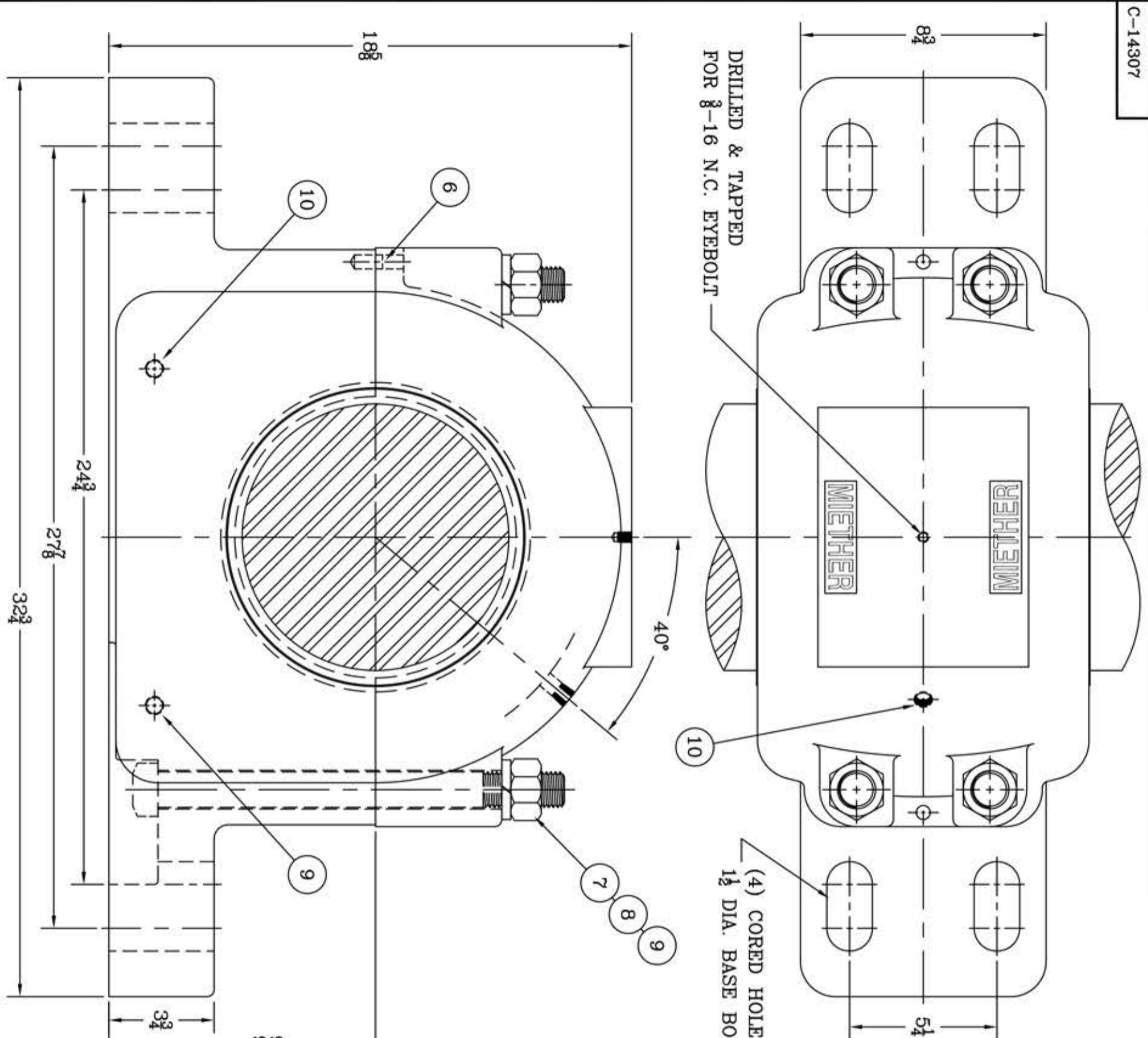
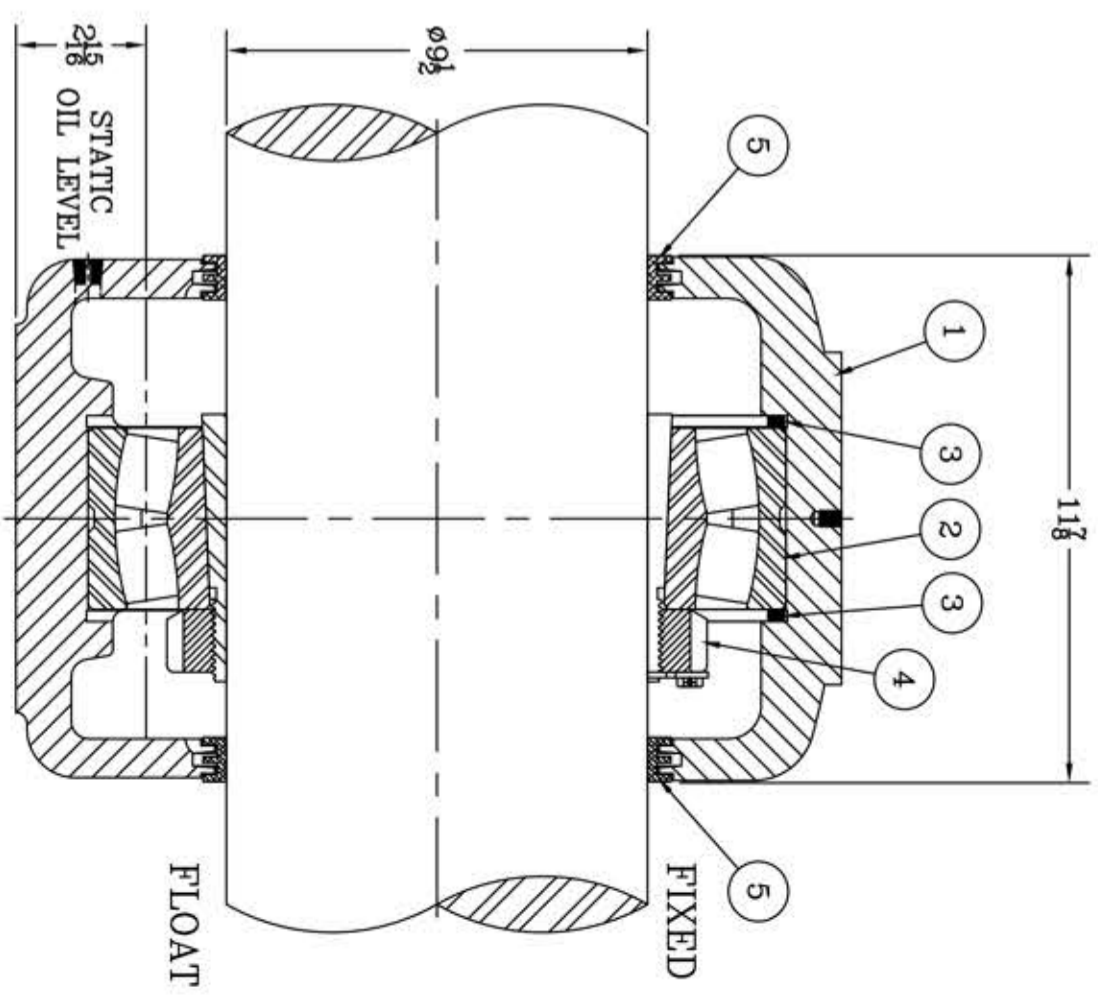


This drawing is the sole property of Miether Bearing Products and contains confidential and proprietary information. It is being provided to you for your use and may not be disclosed to any third party or used for any other purpose without Miether's prior written consent. The [materials] must be returned to the Company upon its demand. Your acceptance of these materials constitutes your acceptance of the foregoing terms.

C-14307



ITEM	DESCRIPTION	DETAIL	REQUIRED
1	HOUSING SAF-052 K 09-08	C-11845-R	1 1
2	SPHERICAL ROLLER BEARING	23052K/W-33	1 1
3	STABILIZING RING SR-8898	A-15856	2 0
4	ADAPTER SNP-3052 09-08	24268	1 1
5	TRIPLE SEAL RING LER-178	A-10681	2 2
6	DOWEL	$\phi 1/2$ x 1" LONG	2 2
7	CAP BOLT SQUARE HEAD	1 1/4-7 NC x 1 1/4" LONG	4 4
8	CAP BOLT HEX. NUT	1 1/4-7 NC	4 4
9	LOCKWASHER	1 1/4 SPLIT MED.	4 4
10	PIPE PLUG	3/8 NPT	3 3



REDRAWN FOR CONFORMITY RWB per KAB 4-21-04

REVISIONS

SYMBOL	MICRO-INCH VALUE	DESCRIPTION
✓	16	REVISION 1
✓	32	REVISION 2
✓	63	REVISION 3
✓	125	REVISION 4
✓	250	REVISION 5
✓	500	REVISION 6
✓	1000	REVISION 7



SAF 23052 K 09-08	ASSEMBLY DRAWING
SCALE 1 = 3	ASSEMBLY NO.
DRAWN CJ	DRAWING NO.
DATE 9/23/71	CHK: C-14307