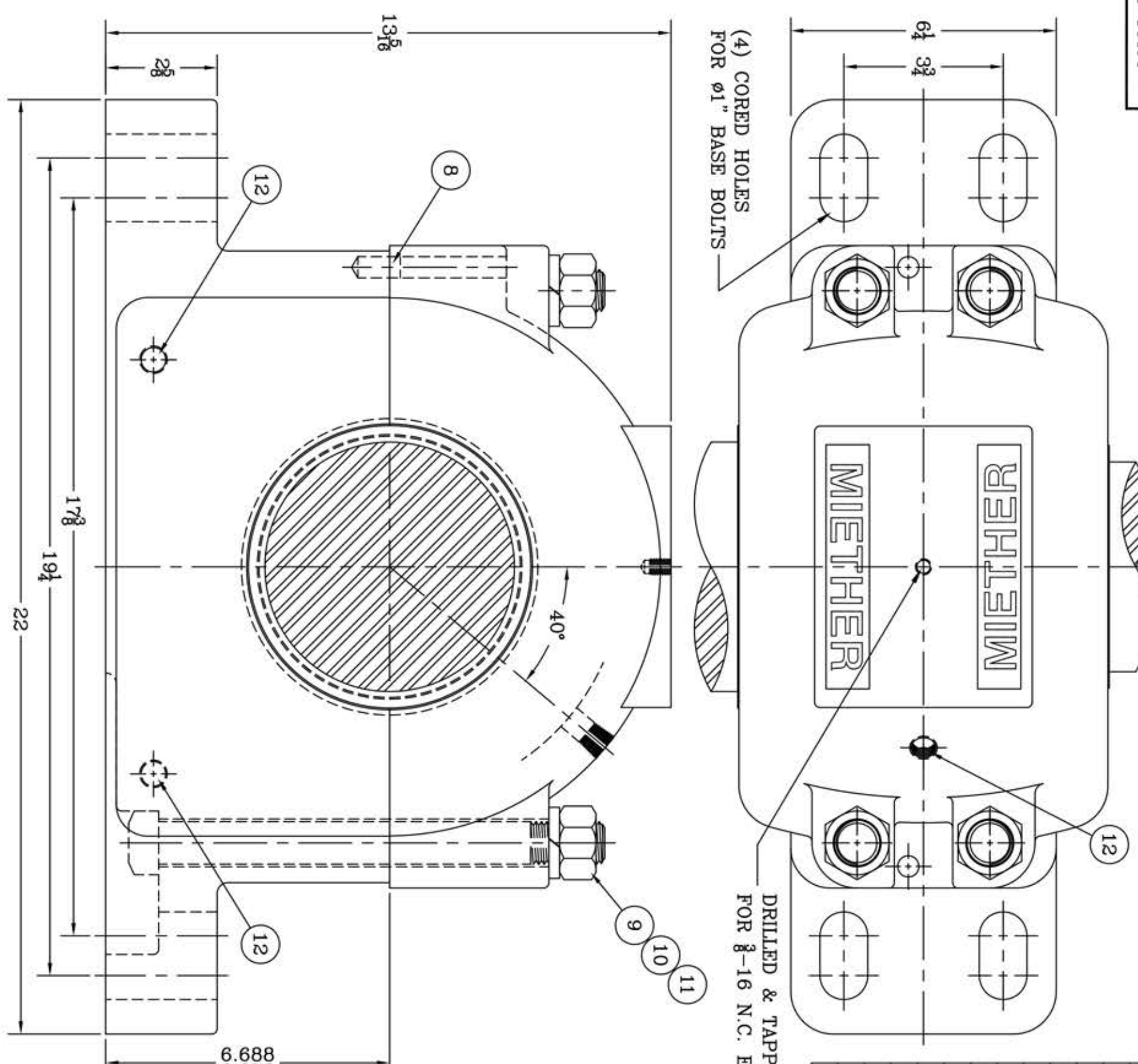


This drawing is the sole property of Miether Bearing Products and contains confidential and proprietary information. It is being provided to you for your use and may not be disclosed to any third party or used for any other purpose without Miether's prior written consent. The [materials] must be returned to the Company upon its demand. Your acceptance of these materials constitutes your acceptance of the foregoing terms.

C-14404



(4) CORED HOLES FOR Ø1" BASE BOLTS

DRILLED & TAPPED FOR 3/16 N.C. EYEBOLT

ITEM	DESCRIPTION	DETAIL	REQUIRED
1	HOUSING SAF 326	C-13172-R	1 1
2	SPHERICAL ROLLER BEARING	22326/W-33	1 1
3	STABILIZING RING SR-0-26	A-10863	1 0
4	LOCKNUT AN-26	B-10417	1 1
5	LOCKWASHER W-26	00247	1 1
6	TRIPLE SEAL RING LER-122	A-10499	1 1
7	TRIPLE SEAL RING LER-136	A-10500	1 1
8	DOWEL	Ø 1/2 x 1" LONG	2 2
9	CAP BOLT SQUARE HEAD	1-8 NC x 10 1/2" LONG	4 4
10	CAP BOLT HEX. NUT	1-8 NC	4 4
11	LOCKWASHER	1" SPLIT MED.	4 4
12	PIPE PLUG	3/8-18 NPT	3 3

REDRAWN FOR CONFORMITY
RWB per KAB
5-6-04

REDRAWN ON COMPUTER
by [signature]
3/26/01

REVISIONS

SYMBOL	DESCRIPTION
✓	16
∇	32
∇	63
∇	125
∇	250
∇	500
∇	1000

TOLERANCE: UNLESS OTHERWISE SPECIFIED

FRACTIONS ± 1/32" ANGLES ± 0° 30'

DECIMALS ± .005" WELD ± 1/16"

CASTING ± 1/16"

A.I.S.I. STANDARD FINISHES

AN ALCO INDUSTRIES COMPANY
BEARING PRODUCTS
ODESSA, TX. USA

SAF 22326 05-14 x 04-15
ASSEMBLY DRAWING

SCALE HALF
DRAWN CJ
DATE 3/9/71
CHK:

ASSEMBLY NO.
DRAWING NO. C-14404