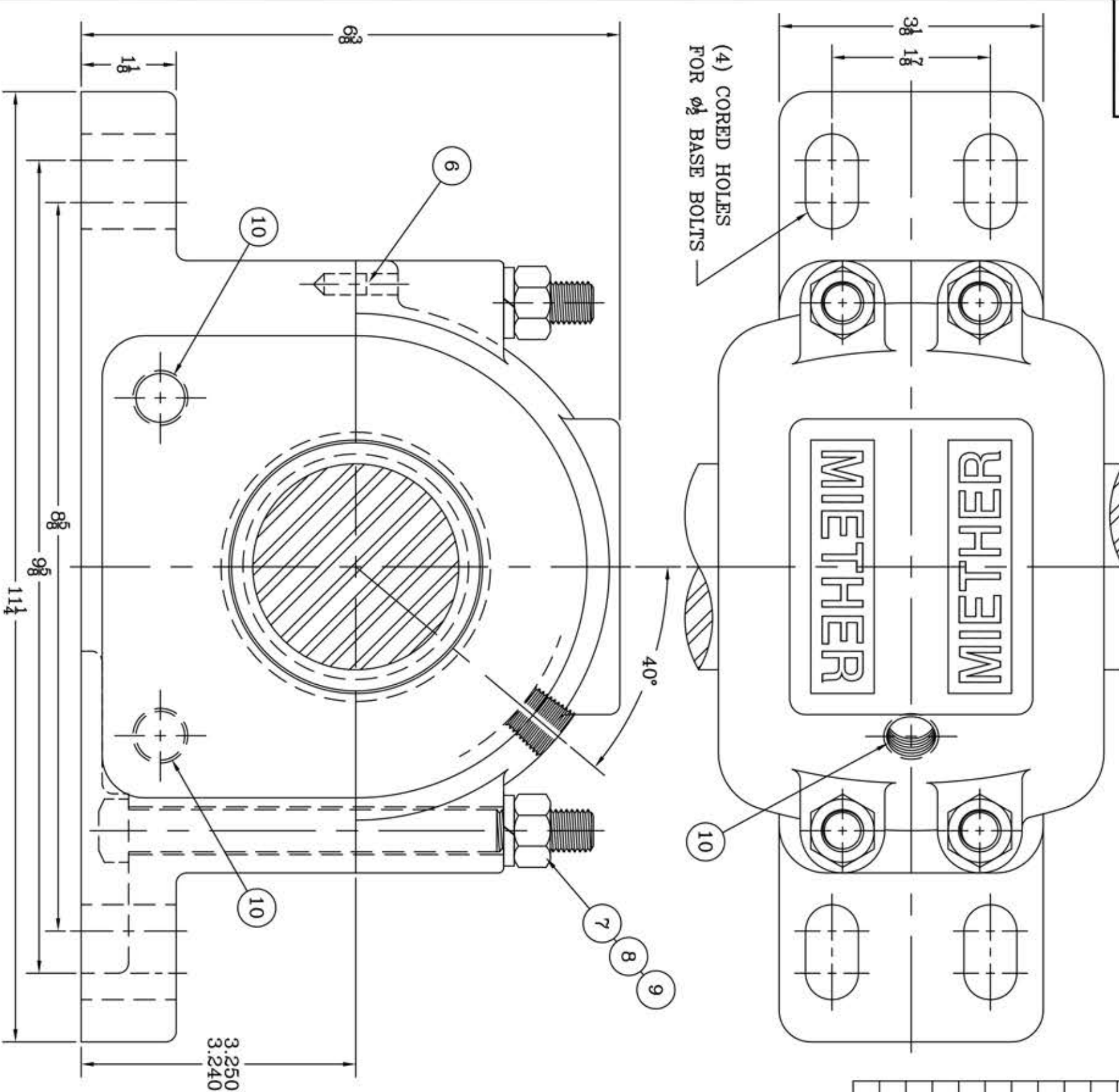
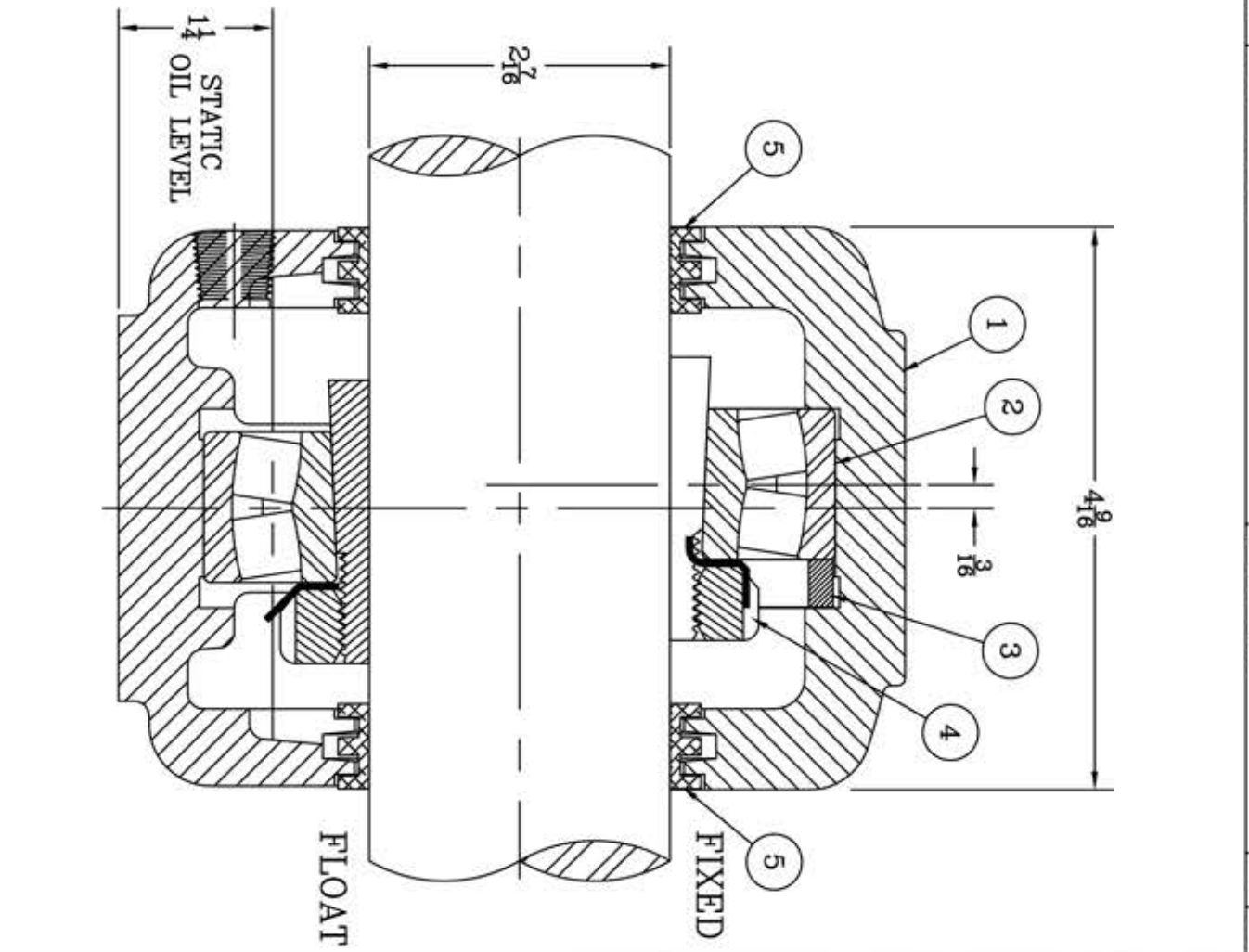


This drawing is the sole property of Miether Bearing Products and contains confidential and proprietary information. It is being provided to you for your use and may not be disclosed to any third party or used for any other purpose without Miether's prior written consent. The [materials] must be returned to the Company upon its demand. Your acceptance of these materials constitutes your acceptance of the foregoing terms.

C-14002



ITEM	DESCRIPTION	DETAIL	REQUIRED
1	HOUSING FSAP 515 02-07	C-13951-R	1 1
2	SPHERICAL ROLLER BEARING	22215K/W33	1 1
3	STABILIZING RING SR-15-12	A-10598	1 0
4	ADAPTER SNW-15 02-07	B-24398	1 1
5	TRIPLE SEAL RING LER-37	A-11015	2 2
6	DOWEL	$\phi \frac{1}{4}$ x $\frac{3}{8}$ LONG	2 2
7	CAP BOLT SQUARE HEAD	$\frac{1}{2}$ -13 NC x $5 \frac{1}{2}$ LONG	4 4
8	CAP BOLT HEX. NUT	$\frac{1}{2}$ -13 NC	4 4
9	LOCKWASHER	$\frac{1}{2}$ SPLIT MED.	4 4
10	PIPE PLUG	$\frac{3}{8}$ -18 NPT	3 3



REDRAWN FOR CONFORMITY
RWB per KAB
12-24-03

REDRAWN ON COMPUTER
OMI 6-29-01

REVISIONS	
SYMBOL	DESCRIPTION
16	16
32	32
63	63
125	125
250	250
500	500
1000	1000

TOLERANCE: UNLESS OTHERWISE SPECIFIED

FRACTIONS $\pm 1/32$ " ANGLES $\pm 0^\circ 30'$

DECIMALS $\pm .005$ CASTING $\pm 1/16$ " WELD $\pm 1/16$ "

A.S.I. STANDARD FINISHES

AN ALCO INDUSTRIES COMPANY

BEARING PRODUCTS

ODESSA, TX. USA

SCALE FULL	
DATE	1/28/88
CHECK	CHK.

FSAP 22515 02-07
ASSEMBLY DRAWING
ASSEMBLY NO.
DRAWING NO.
C-14002