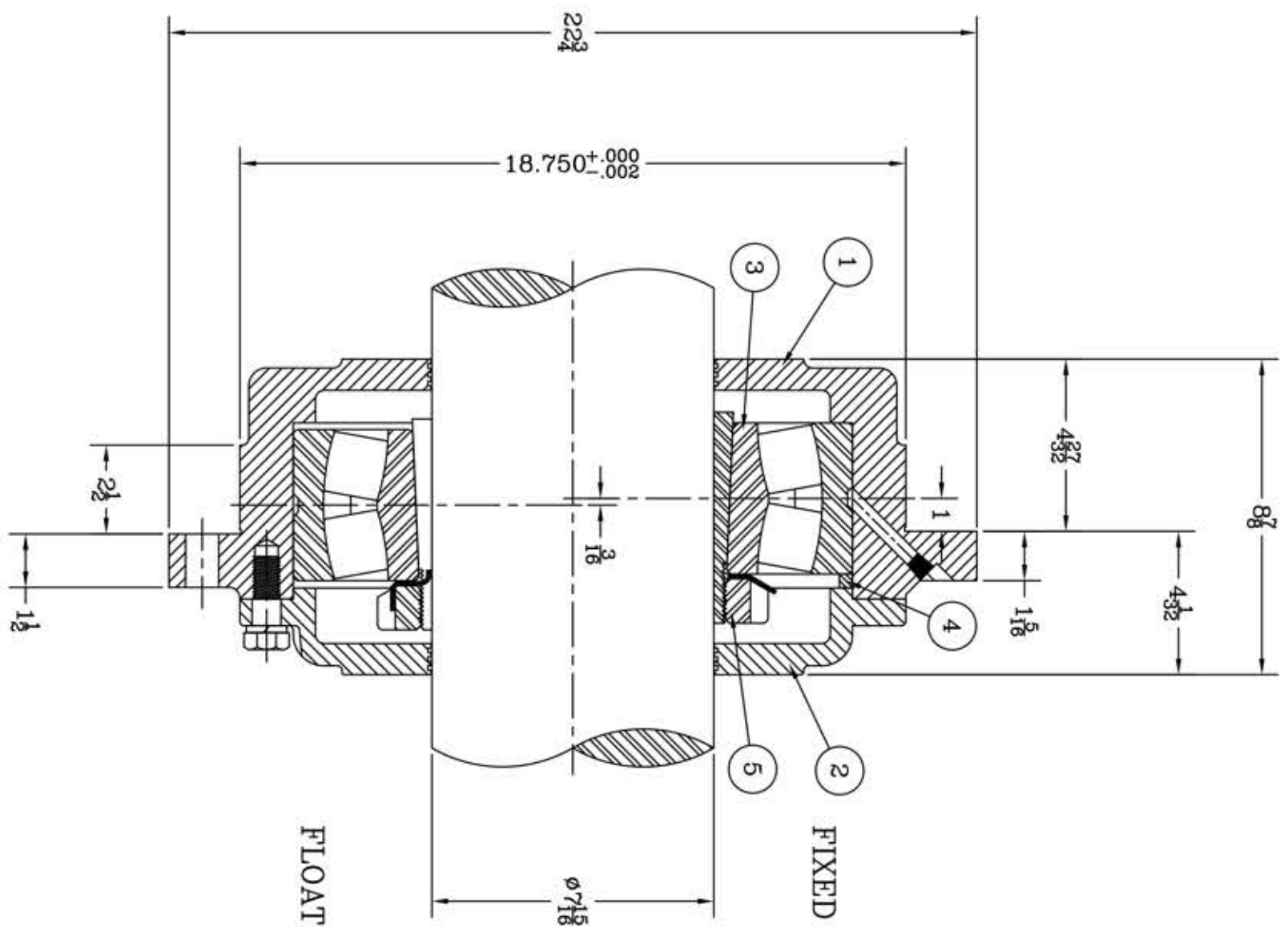
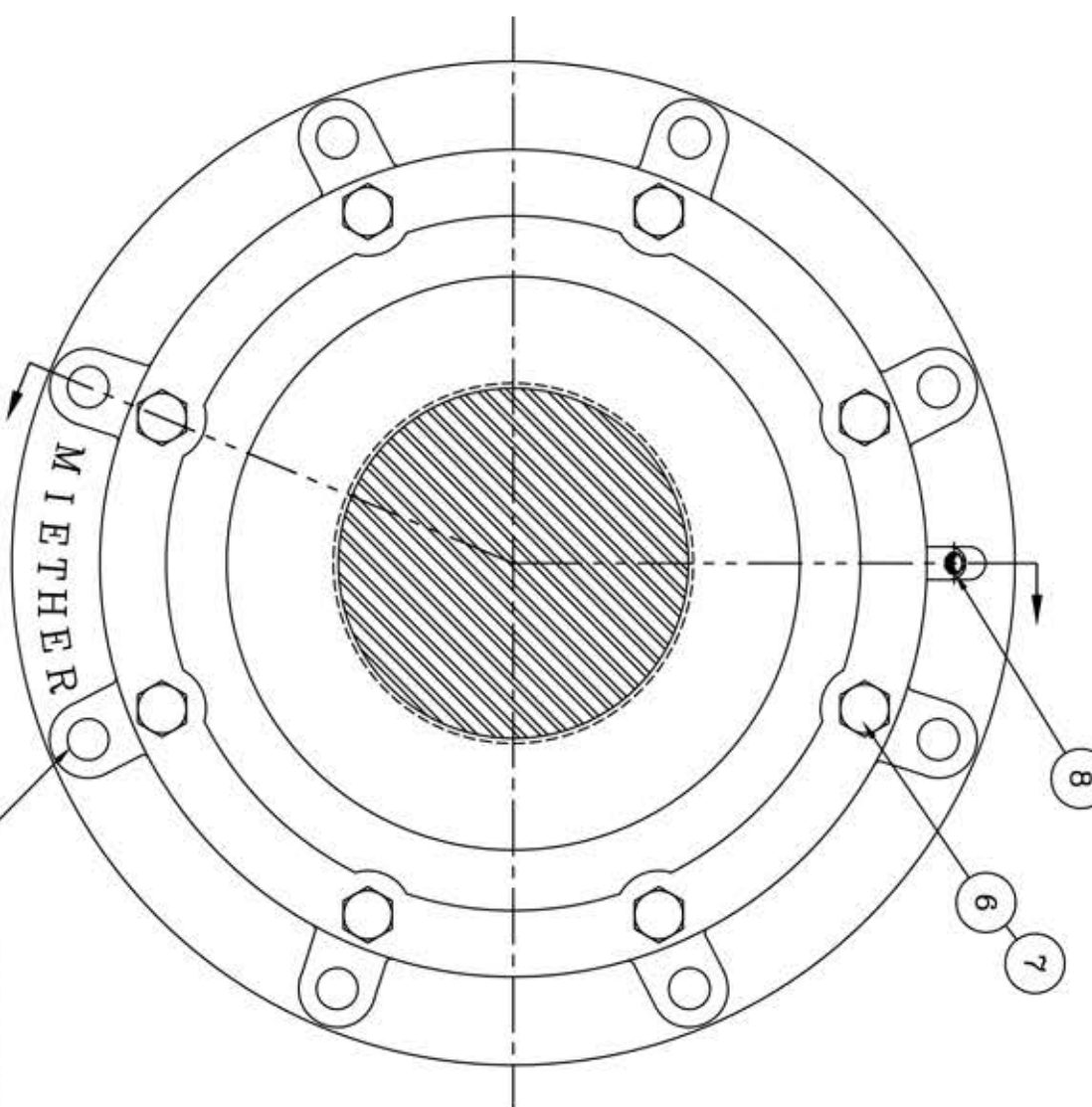


This drawing is the sole property of Miether Bearing Products and contains confidential and proprietary information. It is being provided to you for your use and may not be disclosed to any third party or used for any other purpose without Miether's prior written consent. The [materials] must be returned to the Company upon its demand. Your acceptance of these materials constitutes your acceptance of the foregoing terms.

C-12026



ITEM	DESCRIPTION	DETAIL	REQUIRED
1	HOUSING HL-544	C-12185	1 1
2	ENDCAP KL-544	C-12186	1 1
3	SPHERICAL ROLLER BEARING	22244 K/C3/W33 ①	1 1
4	STABILIZING RING SR 44-38	A-10612	1 0
5	ADAPTER SNW 44 07-15	B-24466	1 1
6	CAP BOLT HEX. HEAD	3-10 NC X 2 LONG	8 8
7	LOCKWASHER	3 SPLIT MED.	8 8
8	PIPE PLUG	1-18 NPT	1 1



① 1/8" DRILLED HOLES
(8) PLCS ON A
208 BOLT CIRCLE
FOR 8 BOLTS

BEARING DESC.
WAS 22244/W33
KAB 11-9-09

REDRAWN FOR
CONFORMITY
AR per KAB
12-31-03

REDRAWN TO
SCALE
OMI per KAB
9-3-00

REVISIONS

SYMBOL	DESCRIPTION
C	16
D	32
E	63
F	125
G	250
J	500
K	1000

TOLERANCE: UNLESS OTHERWISE SPECIFIED

FRACTIONS ± 1/32" ANGLES ± 0° 30'

DECIMALS ± .005" WELD ± 1/16"

CASTING ± 1/16"

A.I.S.I. STANDARD FINISHES

MICRO-INCH VALUE

AN ALCO INDUSTRIES COMPANY
BEARING PRODUCTS
ODESSA, TX. USA

FCL 22544 07-15
ASSEMBLY DRAWING

SCALE 1 = 3
DRAWN OMI
DATE 9/20/94
CHK.

ASSEMBLY NO.
DRAWING NO.
C-12026