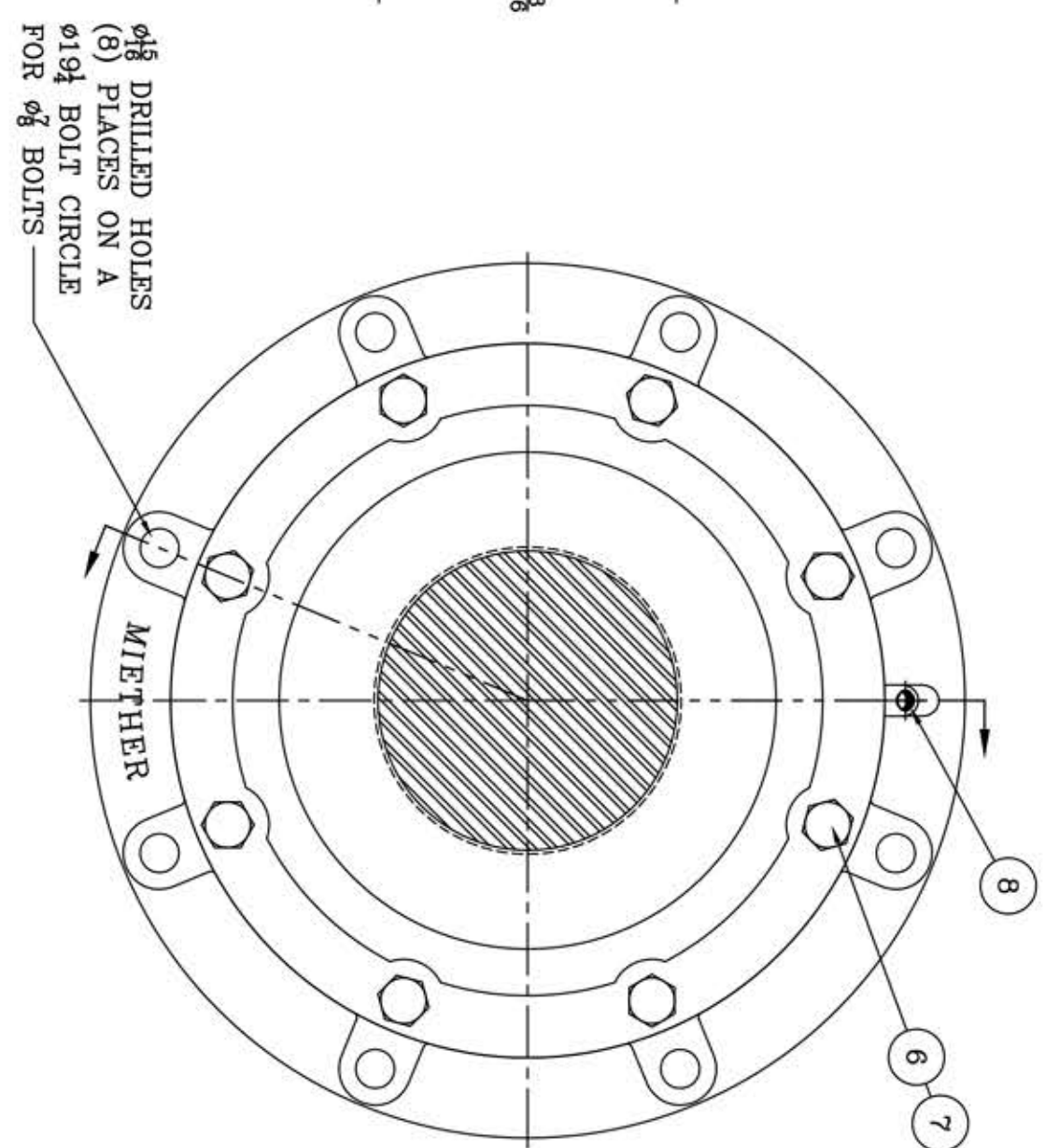
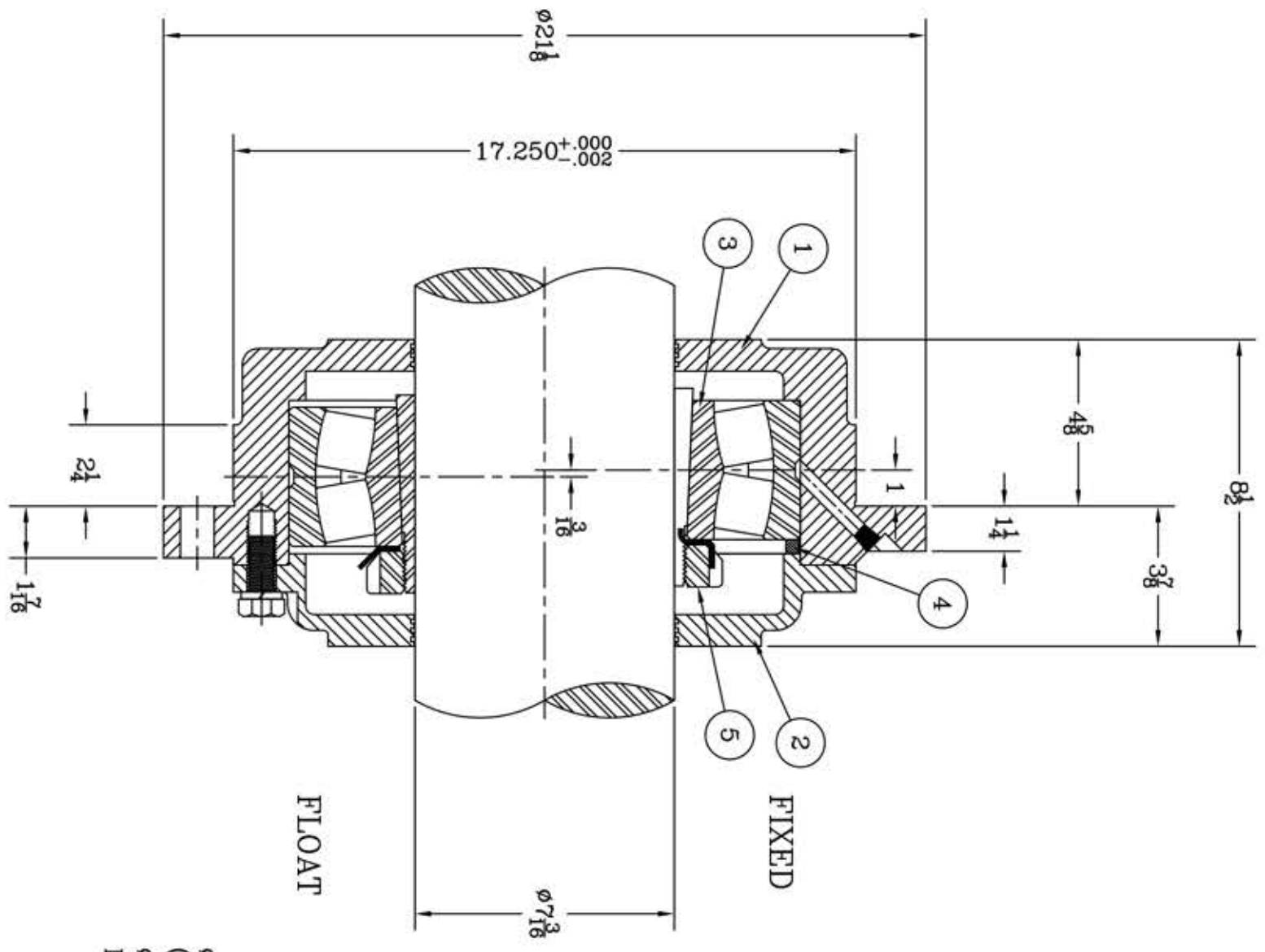


This drawing is the sole property of Miether Bearing Products and contains confidential and proprietary information. It is being provided to you for your use and may not be disclosed to any third party or used for any other purpose without Miether's prior written consent. The [materials] must be returned to the Company upon its demand. Your acceptance of these materials constitutes your acceptance of the foregoing terms.

C-12025



ITEM	DESCRIPTION	DETAIL	REQUIRED
1	HOUSING HL-540	C-12183	1 1
2	ENDCAP KL-540	C-12184	1 1
3	SPHERICAL ROLLER BEARING	22240K/W33	1 1
4	STABILIZING RING SR-40-34	A-10611	1 0
5	ADAPTER SNW40 07-03	B-24461	1 1
6	CAP BOLT HEX HEAD	3/4-10 NC x 1 1/4 LONG	8 8
7	LOCKWASHER	3/4 SPLIT MED.	8 8
8	PIPE PLUG	1/4-18 NPT	1 1

REDRAWN FOR CONFORMITY AR per KAB 12-31-03
 REDRAWN ON COMPUTER W/CHANGES RWB per JLL 10-6-00

REVISIONS

SYMBOL	VALUE	DESCRIPTION
✓	16	REVISIONS
∇	32	
∇	63	
∇	125	
∇	250	
∇	500	
∇	1000	

TOLERANCE: UNLESS OTHERWISE SPECIFIED
 FRACTIONS +- 1/32" ANGLES +- 0° 30'
 DECIMALS +- .005" WELD +- 1/16"
 CASTING +- 1/16"
 A.I.S.I. STANDARD FINISHES

MIETHER
 BEARING PRODUCTS
 AN ALCO INDUSTRIES COMPANY
 ODESSA, TX, USA

FCL 22540 07-03
 ASSEMBLY DRAWING
 SCALE 1 = 3
 DRAWN REB
 DATE 4/23/68
 CHK:

ASSEMBLY NO.
 DRAWING NO.
 C-12025