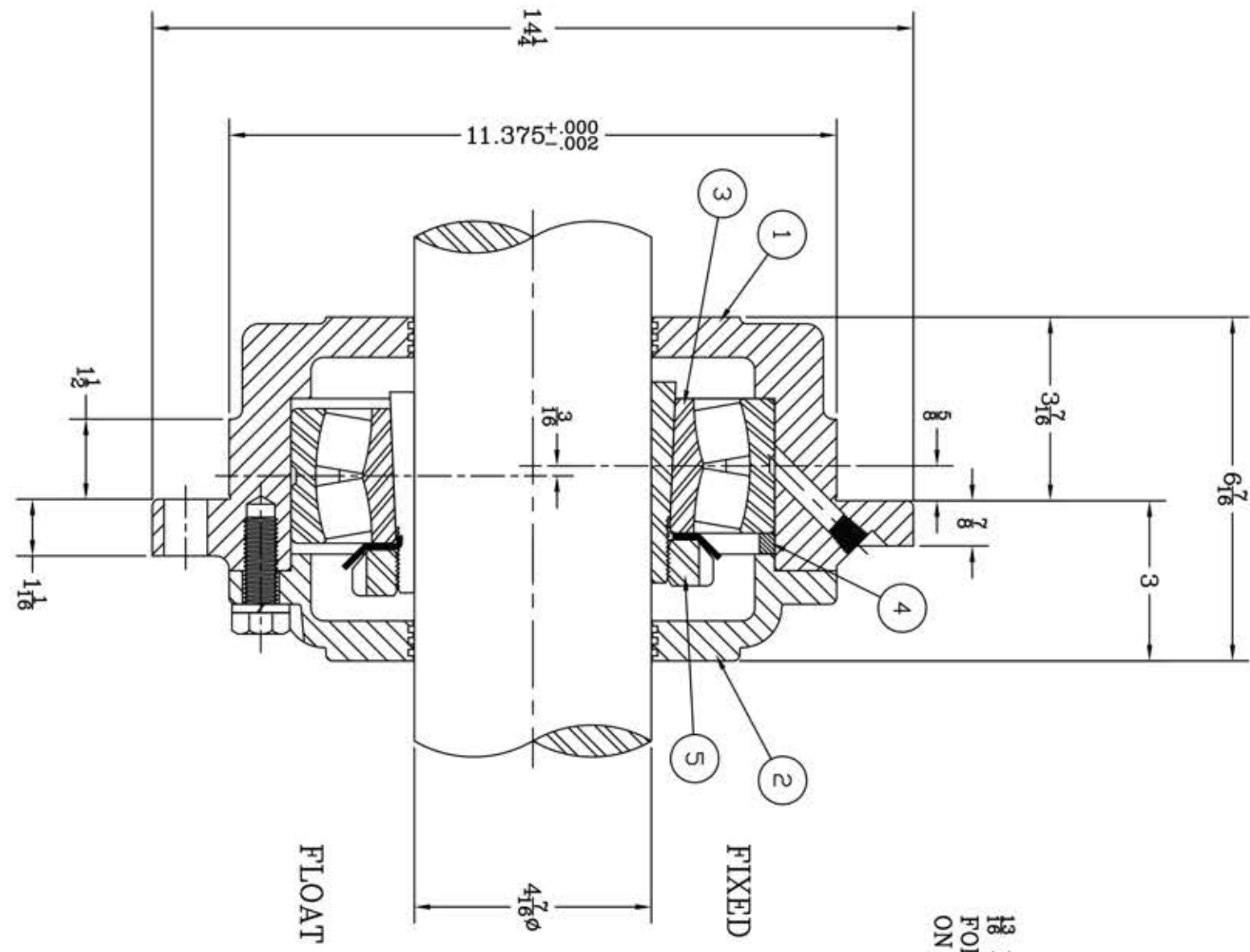
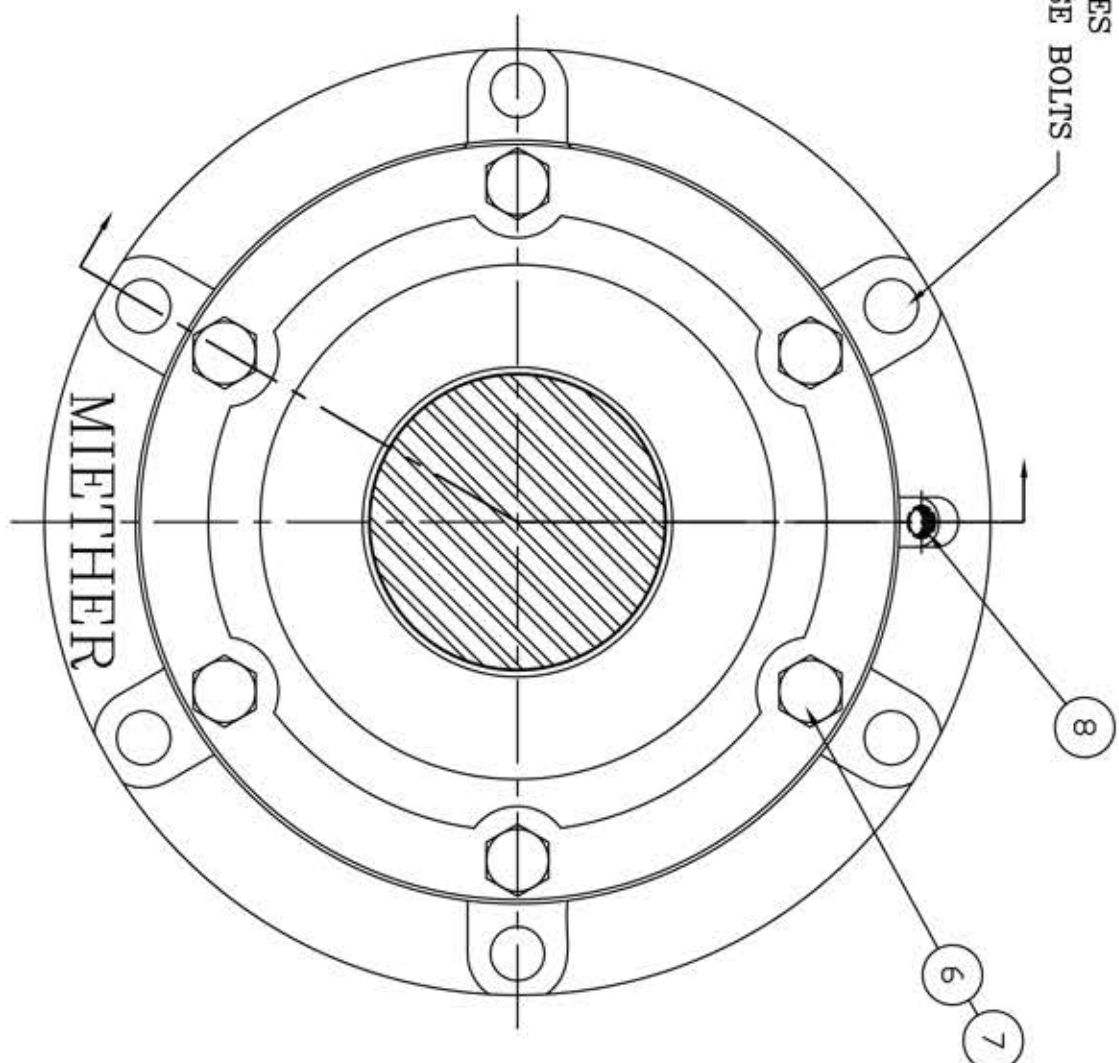


This drawing is the sole property of Miether Bearing Products and contains confidential and proprietary information. It is being provided to you for your use and may not be disclosed to any third party or used for any other purpose without Miether's prior written consent. The [materials] must be returned to the Company upon its demand. Your acceptance of these materials constitutes your acceptance of the foregoing terms.

C-12018



13 DRILLED HOLES FOR (6) - 3/8" BASE BOLTS ON 13 B.C.



ITEM	DESCRIPTION	DETAIL	REQUIRED
1	HOUSING HL-526	C-12167	1 1
2	ENDCAP KL-526	C-12168	1 1
3	SPHERICAL ROLLER BEARING	22226K/W 33	1 1
4	STABILIZING RING SR-26-0	A-10605	1 0
5	ADAPTER SNW 26 04-07	B-24429	1 1
6	CAP BOLT HEX. HEAD	8-11 NC x 1 1/2	6 6
7	LOCKWASHER	5 SPLIT MED.	6 6
8	PIPE PLUG	1-18 NPT	1 1

REDRAWN FOR CONFORMITY AR per KAB 12-30-03
 REDRAWN TO SCALE OMI per KAB 7-16-99
 REDRAWN ON COMPUTER OMI per KAB 12-5-94

REVISIONS

SYMBOL	DESCRIPTION
✓	16
✓	32
✓	63
✓	125
✓	250
✓	500
✓	1000

TOLERANCE: UNLESS OTHERWISE SPECIFIED
 FRACTIONS ± 1/32" ANGLES ± 0° 30'
 DECIMALS ± .005" WELD ± 1/16"
 CASTING ± 1/16"
 A.I.S.I. STANDARD FINISHES

AN ALCO INDUSTRIES COMPANY
 BEARING PRODUCTS
 ODESSA, TX. USA

FCL 22526 04-07
 ASSEMBLY DRAWING
 SCALE HALF
 DRAWN REB
 DATE 4/13/68
 ASSEMBLY NO.
 DRAWING NO.
 C-12018