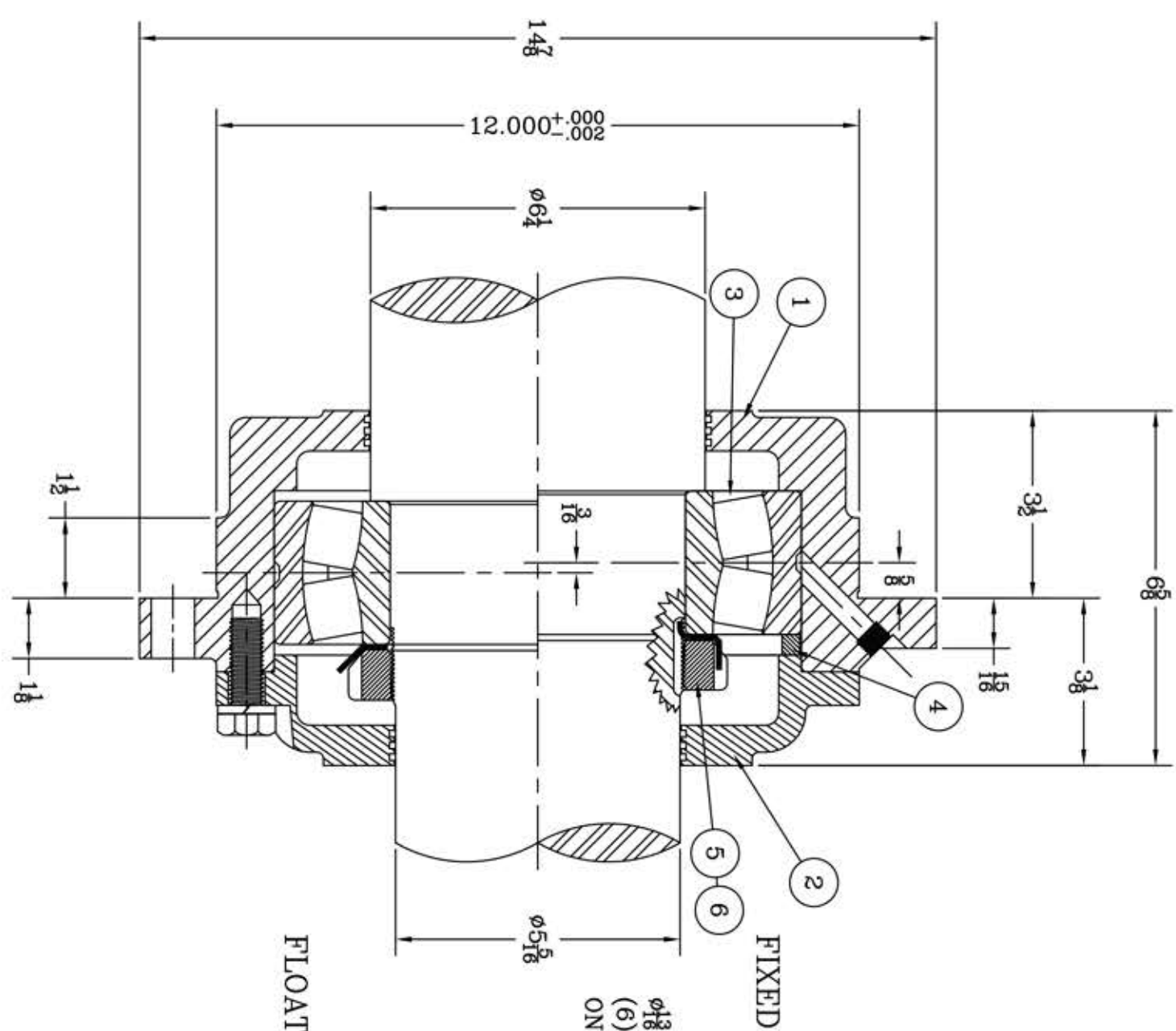
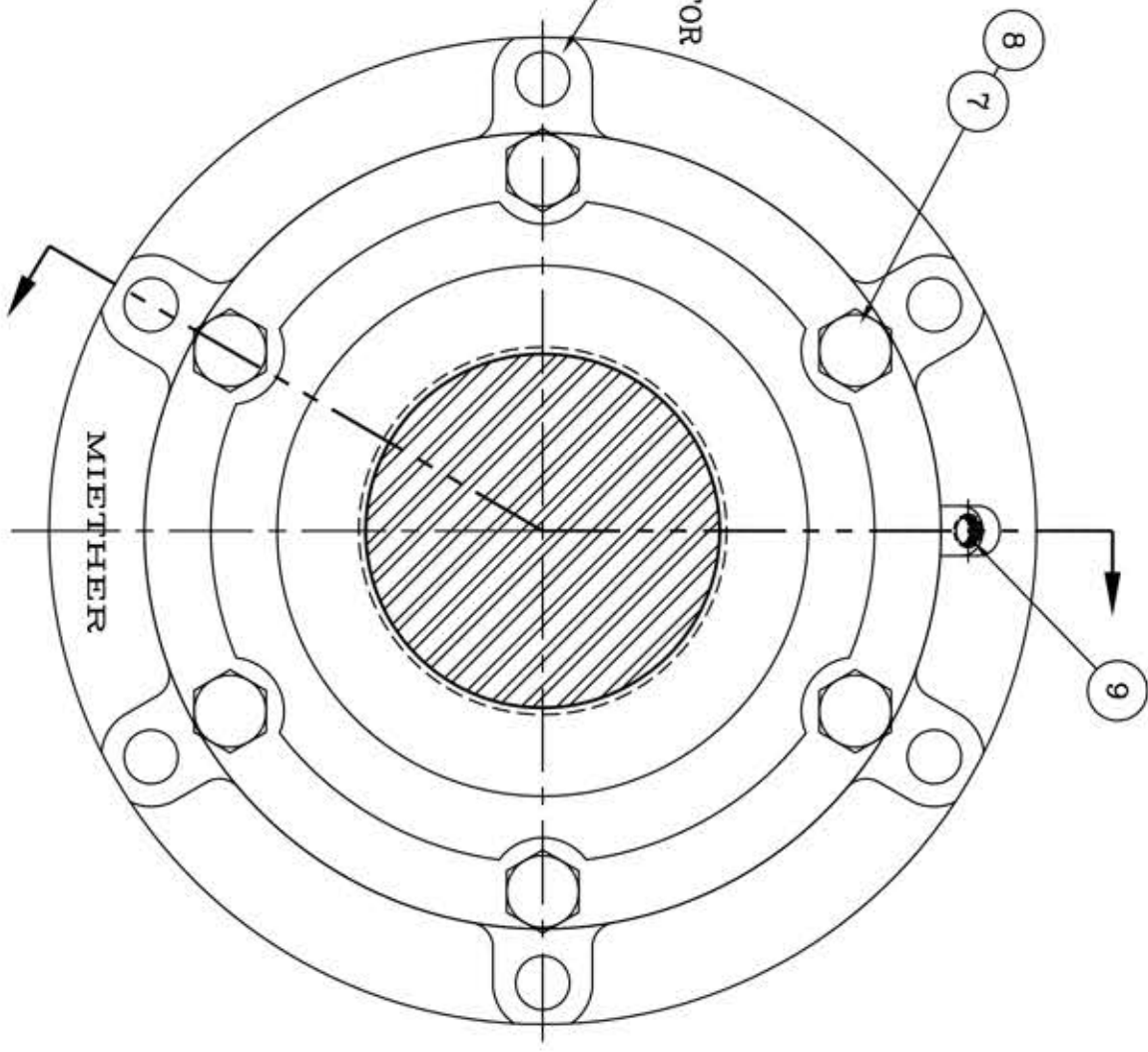


This drawing is the sole property of Miether Bearing Products and contains confidential and proprietary information. It is being provided to you for your use and may not be disclosed to any third party or used for any other purpose without Miether's prior written consent. The [materials] must be returned to the Company upon its demand. Your acceptance of these materials constitutes your acceptance of the foregoing terms.

C-17146



φ1 3/8 DRILLED HOLES FOR
(6) 3/4 BOLTS
ON 1 3/8 B.C.



ITEM	DESCRIPTION	DETAIL	REQUIRED QTY.
1	HOUSING HL-228	C-13110	1
2	ENDCAP KL-228	C-17144	1
3	SPHERICAL ROLLER BEARING	22228/W 33	1
4	STABILIZING RING SR-28-0	A-10606	1
5	LOCKNUT AN-28	B-10418	1
6	LOCKWASHER W-28	~~~~~	1
7	CAP BOLT HEX. HEAD	5-11 NC x 1 1/2 LONG	6
8	LOCKWASHER	3 SPLIT MED.	6
9	PIPE PLUG	1-18 NPT	1

REDRAWN ON
COMPUTER
AR per KAB
2-26-04

REVISIONS

S	SYMBOL	DESCRIPTION
1	C	ASSEMBLY FINISHES
2	D	WELD
3	E	ANGLES
4	F	CASTING
5	G	FRACTIONS
6	H	DECIMALS
7	I	WELD
8	J	ANGLES
9	K	FRACTIONS

TOLERANCE: UNLESS OTHERWISE SPECIFIED
 FRACTIONS ± 1/32"
 DECIMALS ± .005"
 CASTING ± 1/16"
 ANGLES ± 0° 30'
 WELD ± 1/16"
 A.I.S.I. STANDARD FINISHES
 MICRO-INCH VALUE
 16 32 63 125 250 500 1000

AN ALCO INDUSTRIES COMPANY
BEARING PRODUCTS
ODESSA, TX. USA

FCL 22228 06-04 x 05-05
 ASSEMBLY DRAWING
 SCALE HALF
 DRAWN CJ
 DATE 10/25/76
 CHK.

ASSEMBLY NO.
 DRAWING NO.
 C-17146